



# wall and ceiling panels



**100% ORIGINAL**  
WALL AND CEILING PANELS  
• MADE BY KRONOSPAN •



Made by Kronospan

[www.krono-original.com](http://www.krono-original.com)

# wide panel

9039 Pine White, Wide Panel



9039 Pine White



5904 Bayside Oak



5903 Niagara Oak



thickness 10 mm



# harmony – thickness 10 mm

## A touch of elegance for your walls and ceilings.

Decorate your walls and ceilings with elegant panels in three different widths. Suitable for every room, easy to clean and suitable for use in wet rooms. You'll also enjoy easy installation thanks to our practical click-system. Classy new designs with style.

## Wand und Decke in edlem Look.

Frisches Design für Decke und Wand – mit eleganten Paneelen in drei unterschiedlichen Breiten. Passend für jeden Raum, pflegeleicht und feuchtraumtauglich, kinderleicht zu installieren dank praktischer Click-Verbindung. Stilvoll in neuen, modischen Designs.



5909 Tulip Wood, XL Panel

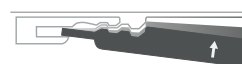
Suitable for wet rooms  
Feuchtraumtauglich

Noise and heat insulating  
Schall- und wärmeisolierend

Heatproof for flush light fittings  
Hitzebeständig für Einbauleuchten

Easy to clean and washable  
Pflegeleicht und abwaschbar

Light-fast  
Lichtecht



↑ 10 mm

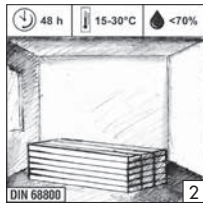
clic – easy to fit

**10** years  
guarantee

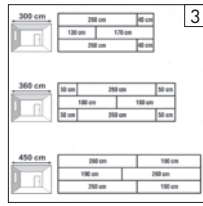
# Installation



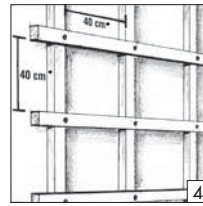
Tools required  
Benötigtes Werkzeug



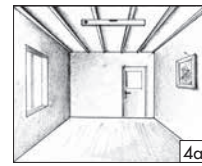
Acclimatise the panels to the room in which they will be laid for 48 hours prior to installation at a temperature of 15-30 °C and a relative humidity of 40-70%.  
Material vor Verlegung akklimatisieren und im zu verlegenden Raum 48 h lagern, bei 15-30 °C und 40-70 % relativer Luftfeuchte.



Plan out panel installation to reduce waste.  
Verlegeplan erstellen, um Verschnitt zu optimieren.



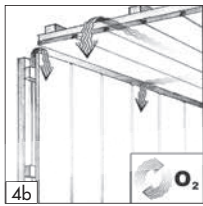
Construct a batten frame.  
Unterkonstruktion/Lattung anbringen.  
\* xl panel: 30 cm



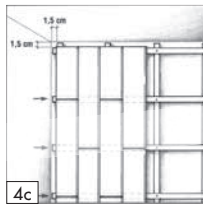
Batten frame – living room  
Lattung Wohnzimmer



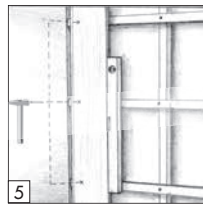
Batten frame – wet room  
Konterlattung bei Feuchträumen



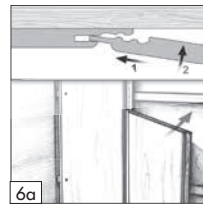
Ensure adequate ventilation!  
Hinterlüftung sicherstellen!



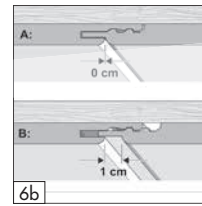
Always fix the vertical battens first.  
Querstöße müssen hinterlattet sein.



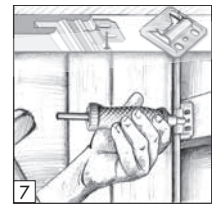
Take the first panel and nail in place or secure with starter brackets.  
1. Paneel ausrichten und mit Nägeln oder Anfangsklammer befestigen.



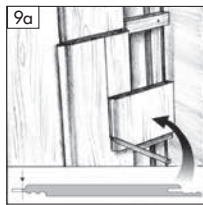
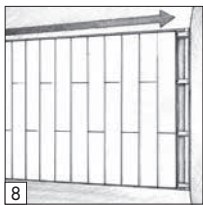
Mount the remaining panels.  
Weitere Paneele montieren.



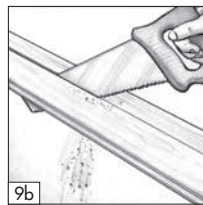
Install with either a zero joint (A) or visible joint (B).  
Montage wahlweise mit Null-Fuge (A) oder cm-Fuge (B).



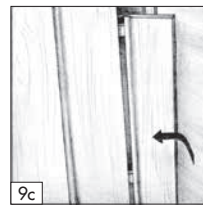
Secure the panels with our bespoke CL 3.6 K bracket (tip: use a nail to help you) or...  
Paneele mit Spezialkralle CL 3.6 K (Tipp: Verwenden Sie eine Nagelhilfe!) oder...



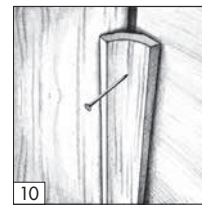
Mark up the last panel...  
Letztes Paneel anzeichnen...



...and cut it to size.  
...und zuschneiden.



Slot into place.  
Einpassen.



Attach edging.  
Abdeckleisten befestigen.



[www.add2-flooring.com](http://www.add2-flooring.com)



[www.krono-original.com](http://www.krono-original.com)  
[www.facebook.com/KronoOriginal](http://www.facebook.com/KronoOriginal)

**kronospan**

KRONOSPAN GmbH Lampertswalde  
Mühlbacher Straße 1 · D-01561 Lampertswalde/Dresden  
Tel: +49 3522 33-30 · Fax: +49 3522 33-399  
[info@krono-original.com](mailto:info@krono-original.com)

01/17/01

Product information in this brochure is correct at time of publication. The company has a policy of continuous product development and reserves the right to change any product specifications given in this brochure. Due to the variations in the printing process, colours in this brochure may be subject to deviation from the actual products. Die Produktinformationen in diesem Katalog entsprechen dem aktuellen Stand zum Zeitpunkt des Druckes. Aufgrund unserer kontinuierlichen Produktentwicklungspolitik behalten wir uns das Recht zur Änderung von Produktspezifikationen vor. Aus drucktechnischen Gründen können die Originaldekore von den Abbildungen in diesem Katalog abweichen.